



insights for the life of your business™

## MAS 500

### WEB-BASED REPORTING

All Advanced Manufacturing reports can be generated and viewed through Microsoft Internet Explorer with our Web Reports module, at the same high level of security as with the module's standard output.

### REPORTING FEATURES

- Maintain custom form layouts for printed forms used throughout all MAS 500 modules.
- Tailor forms to your organization's design requirements.
- Export all report data to an external file. Data types supported include ASCII text, delimited, Excel, Lotus 1-2-3, HTML, RTF, or Microsoft Word.
- Output any report to the screen, a printer or a variety of file formats.
- Create customized, presentation-quality reports through Crystal Reports software.

### REPORTS

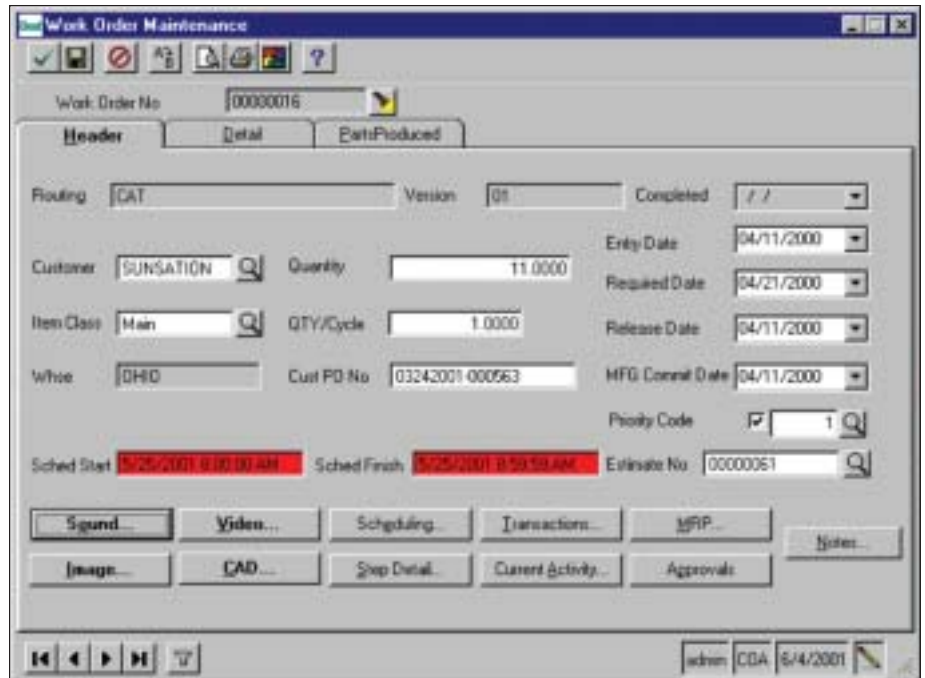
- Work Order Completion
- Work Order Printing
- Open WIP
- Job Costing
- WIP Costing
- Labor Efficiency
- Downtime
- Scrap
- (Outside) Shipment Status
- Employee List
- Downtime List
- Scrap List
- Break Time List
- Work Order Status
- Current Activity

### MAS 500 SOLUTIONS

- CRM and E-business
- Financials and Project Accounting
- Distribution and Manufacturing
- Human Resources and Payroll
- Customization



## ADVANCED MANUFACTURING



### Advanced Manufacturing Features Provide the Backbone for Production Tracking and Job Costing

MAS 500 Advanced Manufacturing includes all of the functionality of the Light Manufacturing/Advanced Kitting module as well as enhanced work orders and labor and production reporting.

The system provides shop floor visibility to your entire enterprise. With a few mouse-clicks customer service can quickly view the status of a customer order without having to interrupt the shop supervisor. Advanced Manufacturing provides instant visibility to see which employees are currently on the clock in any production facility.

The GAAP-compliant job costing system helps you identify which manufactured items are generating the most profit and which items are costing you money. You will be able to identify production bottlenecks and respond in real time to last minute engineering changes and high priority orders.

Businesses define operations, machines, work centers, and other options based on their needs as opposed to pre-defined options. This allows you to tailor Advanced Manufacturing to your unique manufacturing environment and corporate business model.

Advanced Manufacturing is especially well suited for assembly, electronics, metal fabrication, machine/equipment manufacturing, and other production environments where work order tracking and labor reporting are essential requirements.



## MAS 500 Advanced Manufacturing

*“With MAS 500 Manufacturing we’re going to be more competitive because we’ll have cutting edge software and a better handle on our cost of goods.”*

*Tom Vanneman, CFO  
Escient, Inc.*

### FEATURES:

#### Work Orders

Work orders provide a portal for production management and manufacturing-related activities.

- Work orders may be created quickly from scratch by referencing standard part routings/bills of material and customer sales orders.
- Create a work order from a sales order, on the fly, or create a new work order by copying an existing part routing/bill of material and making changes on a same-as-except basis.
- Multimedia files and CAD drawings may be viewed at both the header and detail levels.
- Backflush labor, overhead, material, or outside costs automatically as production takes place.
- View critical production information including start dates, manufacturing commit dates, work order status, current log-ins for the job, scheduling data, job cost detail, and labor and outside process transactions.
- Automatically issue costs from a purchase order line to a specific customer or to-stock work order.

#### Labor and Production Reporting

Track actual labor times for accurate job costing and labor / production efficiencies.

- Use paper job tickets to track employee times, material issues, and production quantities.
- Back out break times from labor time calculations.
- Print detailed shop travelers to route the production order through the shop floor.
- Track scrap by reason code.
- Integrated routing/bill of material provides time-phased material requirements.
- Track run, setup, and down times by operator.
- Labor efficiency reports highlight labor bottlenecks and employee performance issues.

#### Job Costing

Accurate job costing is critical to establishing item prices, profitability and business planning.

- MAS 500 supports GAAP-compliant costing methods including actual (lot), average, standard, FIFO, and LIFO.
- Use standard versus actual cost comparisons to establish and maintain profitable pricing models.
- Advanced general ledger integration provides detailed job cost tracking and posting options for work in process, cost of goods sold, and production variances.

- A “Cost to WIP” flag allows you to choose whether or not to post work in process to the general ledger for any labor transaction.
- The Projected Inventory Valuation report shows forecasted inventory levels and costs by looking at historical, current, and forecasted transactions.

#### Outside Processing

Track shipments of parts to vendors for subcontracted operations such as heat treating, assembly, coating, painting, etc.

- Print shipper documentation to accompany shipments to vendors for subcontracted operations.
- Find out how many parts have been shipped to date and how many are still at the vendor for processing.
- Outside processing is integrated with job costing and labor reporting. This provides more accurate job costs and production schedules.
- Automatically issue outside processing costs to work in process when parts are received from vendors.
- When used with the Advanced Planning & Scheduling module, Advanced Manufacturing customers can set up outside process work centers. This is a key part of the scheduling process since management needs to know how long it will take your vendor to process the parts so they can correctly plan for upstream operations.

#### Lot/Serial Tracking

Track lots and serial numbers backward and forward.

- Use the lot and serial number tree structure to trace raw material lots or serial numbers to finished goods lots or serial numbers.
- Improve quality control by quickly identifying which parts include specific lots or serial numbers.

#### Multiple Parts

Flexible production reporting and manufacturing costing features designed specifically for family molds, progressive dies, and other industries with co-products.

- Identify scrap standards and quality control issues to specific parts.
- Backflush different amounts of labor and overhead, material quantities and costs, or outside process costs to each unique part.
- Backflushed labor, material, and outside costs are added only to parts that were actually produced.
- Handles disassembly of parent items into components and raw materials at standard costs.