



insights for the life of your business™

## MAS 500

### WEB-BASED REPORTING

All Advanced Planning and Scheduling reports can be generated and viewed through Microsoft Internet Explorer with our Web Reports module, at the same high level of security as with the module's standard output.

### REPORTING FEATURES

- Maintain custom form layouts for printed forms used throughout all MAS 500 modules.
- Tailor forms to your organization's design requirements.
- Export all report data to an external file. Data types supported include ASCII text, delimited, Excel, Lotus 1-2-3, HTML, RTF, or Microsoft Word.
- Output any report to the screen, a printer or a variety of file formats.
- Create customized, presentation-quality reports through Crystal Reports software.

### REPORTS

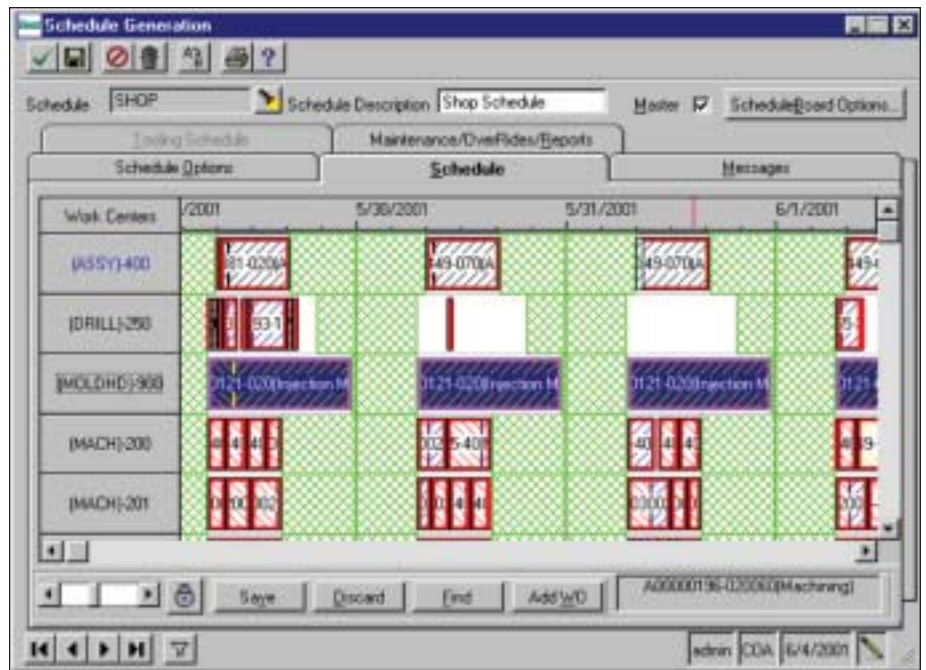
- Work Order Priority
- Work Order Schedule
- Work Center Schedule
- Tool Schedule
- Work Center Utilization
- Machine Utilization
- Late Scheduled Work Orders
- Schedule Exception Message
- Facility List
- Tool Machine List
- Tool List
- Work Center Schedule List
- Machine Schedule List
- Holiday Schedule List

### MAS 500 SOLUTIONS

- CRM and E-business
- Financials and Project Accounting
- Distribution and Manufacturing
- Human Resources and Payroll
- Customization



## ADVANCED PLANNING AND SCHEDULING



### Manage Production Using Advanced Scheduling Rules and the Simple Drag-and-Drop Schedule Board

Do you have problems scheduling production? Are orders late because someone forgot to schedule an operation? Did you ever lose a good customer because production fell behind their required deadline?

MAS 500 includes one of the most powerful and easy-to-use Advanced Planning and Scheduling (APS) systems available today. This module uses industry-standard scheduling rules to automatically schedule production based on advanced algorithms and mathematical calculations.

System-generated schedules provide a great foundation but do not take into consideration real-world concerns. That's why MAS 500 includes a drag-and-drop schedule board.

The schedule board displays all system-generated operation schedules, and it allows supervisors or production scheduling personnel to tweak the schedule to fit in high priority orders or to move scheduled operations to a different machine when another breaks down.

MAS 500 provides company-wide visibility for production schedules. Your customer service, management, sales, and other employees have online access to view the status of each customer order. Best Software provides customer service with tools to quickly find scheduled completion dates across manufacturing facilities.



# MAS 500

## Advanced Planning and Scheduling

*"[MAS 500] has knocked five days off our closing cycle, given us greater control over our processing, and cut the time needed to prepare reports and financial statements."*

*Larry Rapoport, Software Architect  
Captivate Network, Inc.*

### FEATURES:

#### Multiple Schedule Versions

Maintain schedules by version for multiple facilities and what-if simulations.

- Multiple schedule versions may be maintained online.
- Use schedule versions to generate specific schedules for each manufacturing facility and another for the centralized or master schedule.
- Multiple versions provide a means for what-if simulations of the schedule. For example, what if you add another shift on Saturday?
- Modify work center, machine, and holiday schedules and availability by version.

#### Industry-Standard Rules

Utilize advanced scheduling rules to generate realistic production schedules.

- The Advanced Planning and Scheduling (APS) system includes nine different industry-standard scheduling rules including: started operations, locked operations, actual before planned, critical ratio, minimum slack, priority code, required date, due date and entry date.
- Schedule rules may be used in any combination providing literally hundreds of scheduling options.

#### Schedule Flexibility

Various scheduling options are available to customize production schedules.

- Each production schedule includes user-defined start and stop dates.
- You can schedule operations backward from required dates or forward from start dates.
- Work centers may be coded as infinite, finite or excluded for scheduling purposes.
- Work center and machine availability may vary by day. For example, you may decide to add another shift on Saturday to accommodate increased capacity in the assembly work center.
- The schedule board can be customized using schedule board options. This provides greater flexibility for the visual elements of the schedule board including operation patterns, colors, major and minor tick definitions, and more.
- The APS system can be used to schedule operations against special tooling constraints such as jigs, molds, dies or CNC attachments.
- Quickly add new work orders to the schedule board without regenerating the entire schedule.
- Use the Find Work Order utility to quickly locate a work order on the schedule board.
- Reschedule a specific work order or work order step without totally regenerating the production schedule.
- Numerous drill downs and drill arounds provide operation and work center-specific information including operation start dates, estimated

completion dates, work center/machine utilization reports and graphs, work order and work center-specific messages, standard versus actual quantities produced, and much more.

- Utilize built-in shortcut keys to quickly navigate the visual schedule board.

#### Drag and drop Scheduling

Move scheduled operations easily on the schedule board.

- Use your mouse to move scheduled operations backward or forward in time on the schedule board.
- Drag and drop operations from one machine to another within the same work center.
- Lock scheduled operations to prevent them from being moved by another user or the schedule regenerations.
- Rearrange work centers and machines by dragging and dropping them in the desired order.

#### Material Requirements Planning (MRP) Integration

The APS system can be used with MRP to provide a true closed-loop system.

- Include planned orders in the production schedule.
- Use the actual before planned scheduling logic to prioritize actual orders.
- Update changes made to planned and actual work orders after you've made changes on the schedule board. These changes could effect requirement dates for purchased raw materials and other manufactured component items.
- Initialization allows you to bring in new or changed work centers, work orders or planned work orders.

#### Various Access Points

Access APS from various points throughout the system for enhanced scheduling features.

- The APS system may be generated globally from the main menu system or it can be accessed through various applications for specific tasks.
- The schedule can be used to phantom schedule estimated parts when launched from Estimating.
- Phantom schedule line items on a sales order by clicking the Scheduling button on Sales Order Entry.
- Generate a production schedule for a specific MRP version by clicking the Schedule button in MRP.
- View the schedule for a specific work order by clicking the Schedule button on Work Order Inquiry or Maintenance. You can also determine if and how you want to overlap operations for the selected work order.